

Central Community College Career Pathways



Central Community College's Career Pathways prepare high school juniors and seniors for a successful transition to college by providing a supportive environment that promotes responsibility, opportunities and develops skills necessary for future success.

What is a Career Pathway?

Career Pathways provide students the opportunity to explore areas of career fields in greater depth and precision while still in high school. CCC has designed 11 Career Pathways to prepare students for high-skill careers in high-demand. Career Pathways is a partnership between your high school and the college.

Students are engaged in areas of interest and college level coursework.

These programs provide flexibility for students to earn college credit while attending high school. Students may receive both high school and college credit when taking program courses. CCC credits will apply towards a certificate, diploma and associate degree.

What will this cost me?

CCC students have affordable tuition and fees, pay standard rate. Visit www.cccneb.edu/CollegeCosts for more information about tuition and fees. Students may have access to scholarship and foundation funding. Check with your school counselor or administrator regarding tuition assistance. Students may be responsible for tuition and textbooks.

How will I benefit?

In recognition of students who have satisfactorily completed 12 CCC credits while in high school, they will be awarded an honor cord and a scholarship for 12 credit hours at CCC. These credits will be split over two semesters for full-time students enrolling at CCC within twelve months of graduating high school.

How do I register?

Students will need to complete an 'Early College Registration' form before enrolling in any Career Pathway courses. These forms will be provided by a CCC representative or school counselor.

Registered courses will reflect on your college transcript. CCC maintains transfer agreements with a number of colleges and has formal transfer agreements with several institutions. For more information on transferring credits go to:

www.cccneb.edu/transfer.

www.cccneb.edu/EarlyCollege

Contact:

Jamey Peterson-Jones

Early College Director
308-398-7581
877-222-0780, ext. 7581
jameypeterson@cccneb.edu

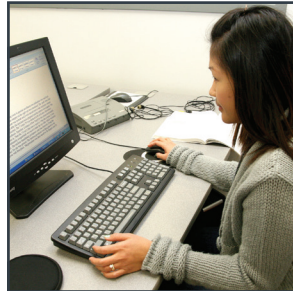
Career Fields Offered



Agricultural Sciences



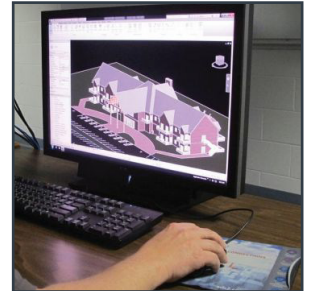
Automotive Technology



Business, Marketing, and Management



Construction Technology



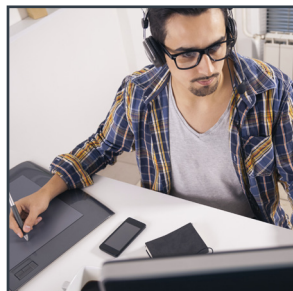
Drafting and Design Technology



Health Sciences



Information Technology



Media Arts

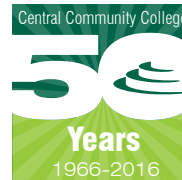


Advanced Manufacturing Design Technology



Welding Technology

Central Community College Career Pathways



Agricultural Sciences

Agricultural Concepts

AGRI 1030 - Intro to Ag and Natural Resources
AGRI 1260 - Intro to Precision Agriculture
AGRI 1310 - Plant Science
AGRI 1350 - Plant Science Lab
AGRI 1700 - Animal Science



Automotive Technology

Automotive Technology

AUTO 1000 - Basic Shop Practices
AUTO 1020 - Basic Shop Practices-Fasteners & Job Management
AUTO 1100 - Automotive Electrical Systems I
AUTO 1200 - Manual Transmissions & Clutches
AUTO 1800 - Brakes, Suspension, Alignment & Tire Balancing I



Business, Marketing, and Management

Business Administration

BSAD 1050 - Introduction to Business
BSAD 2520 - Principles of Marketing
ACCT 1100 - Small Business Accounting
ENTR 1050 - Introduction to Entrepreneurship



Business Technology

Business Software

BTEC 1110 - Computer & Internet Literacy
BTEC 1570 - Desktop Publishing
BTEC 1710 - Word Specialist
BTEC 1720 - Excel Specialist
BTEC 1730 - PowerPoint Specialist
BTEC 1740 - Access Specialist



Program courses include three of the four specialist certifications listed

Construction Technology

Framing

CNST 1290 - Construction Safety
CNST 1300 - Carpentry Tools & Machines
CNST 1500 - Floor, Wall, & Ceiling Framing
CNST 1540 - Scaffold & Cornice Work
CNST 1560 - Exterior Wall & Roof Coverings
CNST 2010 - Gable & Truss Roof Framing
CNST 2110 - Residential Windows (elective)
CNST 2120 - Residential Doors (elective)



Drafting and Design Technology

Drafting and Design Technology

DSGN 1010 - Fundamentals of Design
DSGN 1020 - CAD Fundamentals
DSGN 1050 - Blueprint Reading for Industry
DSGN 1450 - Parametric Design: Inventor



Health Sciences

Pre Nursing

ENGL 1010 - English Composition I
PSYC 2890 - Developmental Psychology
SOC 1010 - Intro to Sociology
HLTH 1200 - Nursing Assistant
HLTH 1470 - Nutrition



Information Technology

Information Technology & Systems Concepts

INFO 1100 - Intro to Information Technology & Systems
INFO 1120 - Microcomputer Applications (elective)
INFO 1600 - IT Support
INFO 1670 - IT Essentials



Advanced Manufacturing Design Technology

General Manufacturing

AMDT 1010 - Safety & Machine Tool Fundamentals
AMDT 1020 - Manual Lathe
AMDT 1040 - Manual Mill
AMDT 1060 - Heat Treating & Metallurgy/Grinding
DSGN 1050 - Blueprint Reading for Industry



Media Arts

Graphic Arts Basic

MART 1200 - Electronic Illustration
ARTS 1270 - Drawing I
MART 1300 - Visual Design I
MART 1360 - Introduction to Graphic Arts



Welding Technology

Production Welding

WELD 1250 - Blueprint Reading
WELD 1320 - Cutting
WELD 1450 - Gas Metal Arc Welding I
WELD 1460 - Gas Metal Arc Welding II
WELD 2480 - Flux-Cored & Submerged Arc Welding

